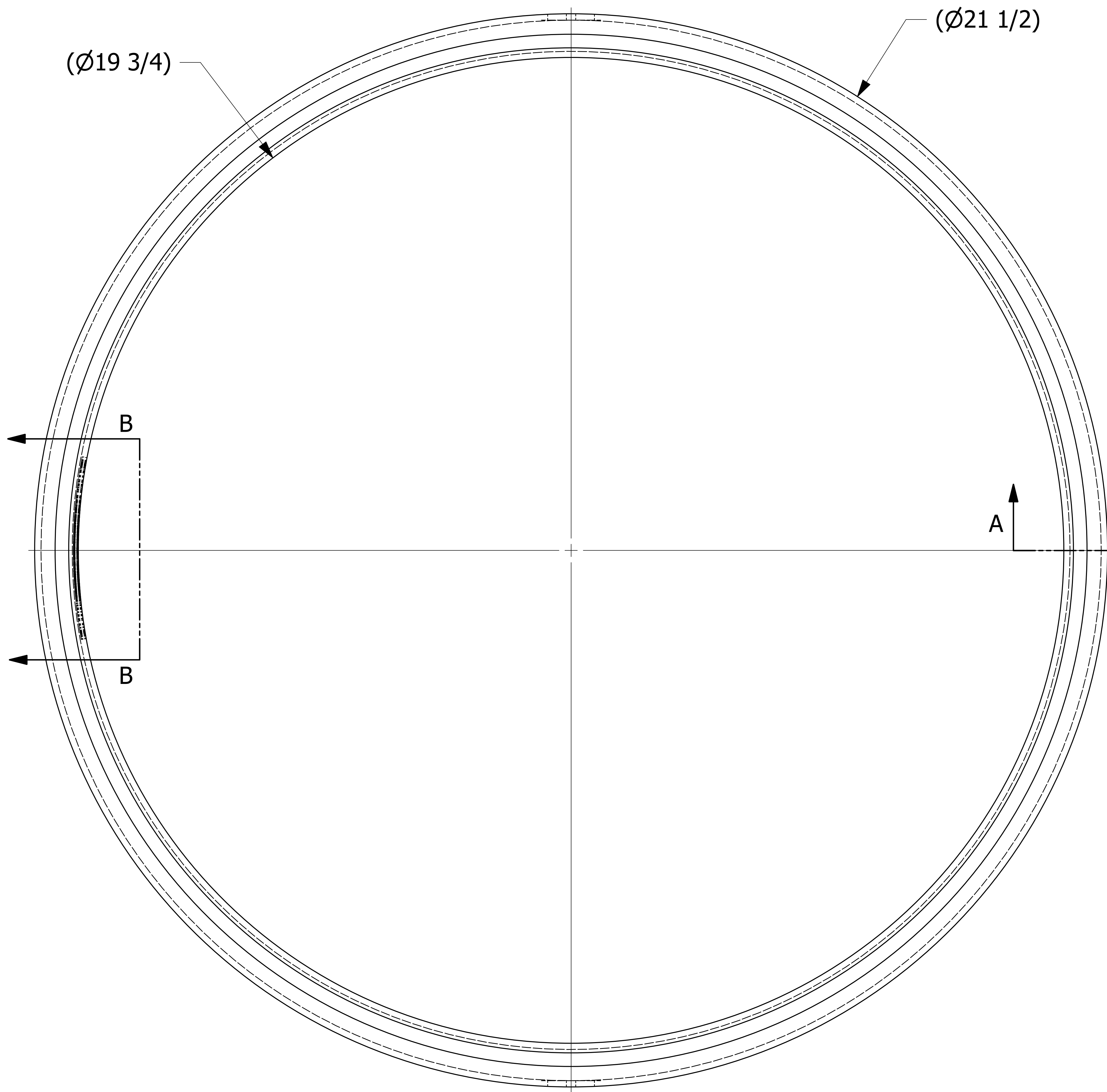


SALES DRAWING SALES DRAWING SALES DRAWING

SALES DRAWING SALES DRAWING SALES DRAWING



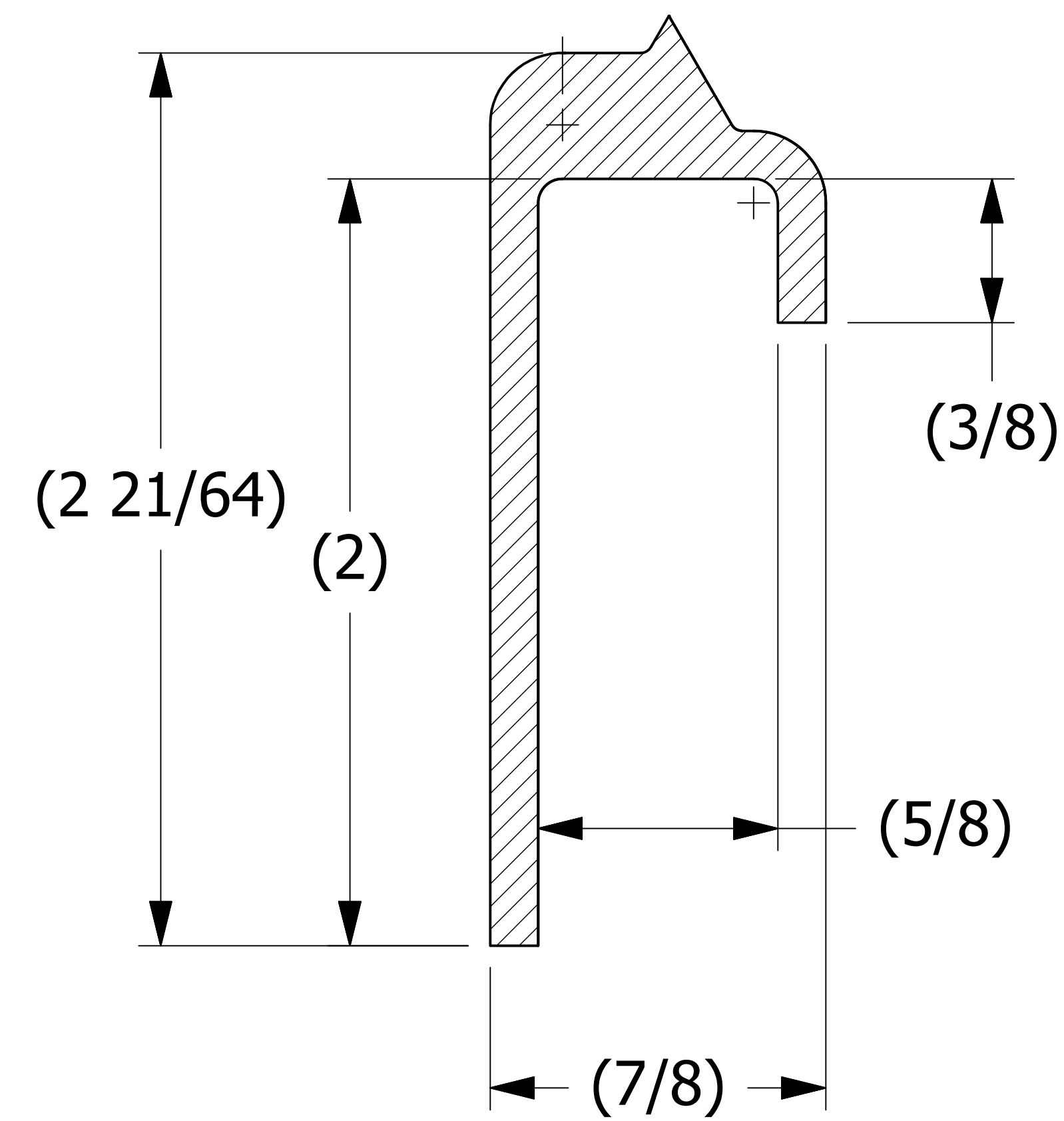
($\varnothing 21 \frac{1}{2}$)

($\varnothing 19 \frac{3}{4}$)

B

A

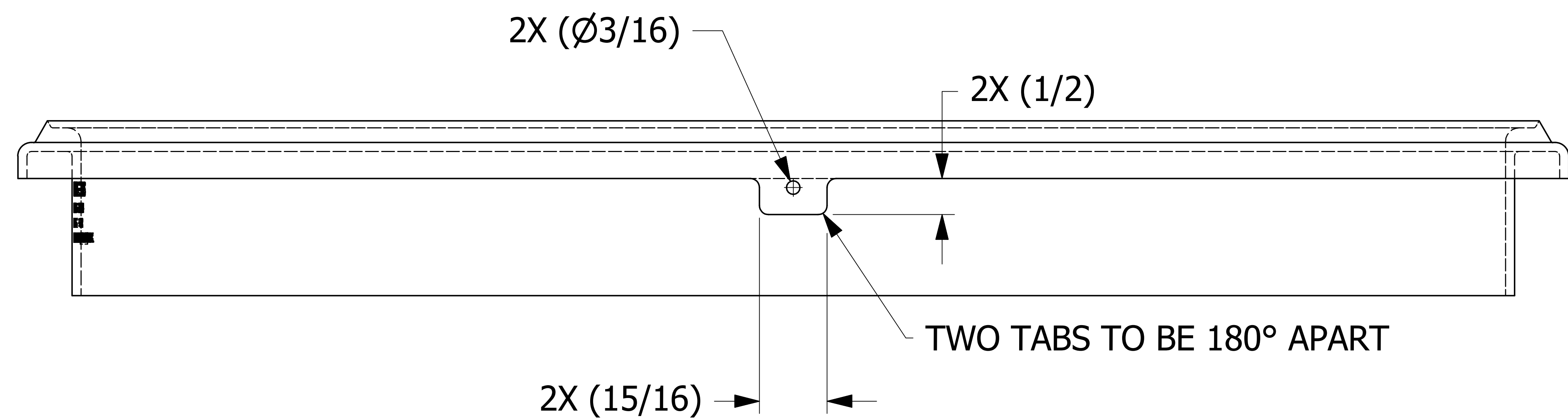
A



SECTION A-A
SCALE 3 : 1

SALCO PRODUCTS
PART # TC20BGNG34
MATERIAL: EPDM
PATENTS: WWW.SALCOPRODUCTS.COM/LEGAL

SECTION B-B
SCALE 3 : 1



2X ($\varnothing 3/16$)

2X ($1/2$)

2X ($15/16$)

TWO TABS TO BE 180° APART

D	WEB	3-20-19	REMOVED "FDA" FROM SECTION B-B; REPLACED PATENT# WITH PATENT WEBSITE
C	JJK	2-20-14	ADDED TABS AND REPLACED CHART DRAWING
REV	BY	DATE	DESCRIPTION

UNLESS OTHERWISE SPECIFIED DIMENSIONAL TOLERANCES FRACTIONAL: $\pm 1/16$ X.XX: $\pm .03$ X.XXX: $\pm .015$ ANGULAR: $\pm 1^\circ$ DEBURR ALL SHARP EDGES. ALL MACHINED SURFACES TO HAVE A 125 RMS FINISH UNLESS NOTED OTHERWISE. THIRD ANGLE PROJECTION	DRAWN BY:	FOD
	CHECKED BY:	SAB
	PROTOTYPE BY:	FOD
	PROTOTYPE DATE:	3/29/2016
	APPROVED FOR PRODUCTION BY:	SAB
	PRODUCTION DATE:	7/19/1999

SALCO PRODUCTS, INC.

PART NAME: **MANWAY NOZZLE GASKET 20"**

MATERIAL: **BLACK EPDM SC**

PROJECT #: **980623** SHEET #: **1 OF 1** SCALE: **1:1**

DRAWING #: **E34320** PART #: **TC20BGNG34**

THIS PRINT, PROPERTY OF SALCO PRODUCTS INC. CONTAINS PROPRIETARY INFORMATION AND MUST NOT BE COPIED, REPRODUCED, OR USED DETRIMENTALLY TO OUR INTEREST.